

P-51D MUSTANG

INSTRUCTION MANUAL



Warning:

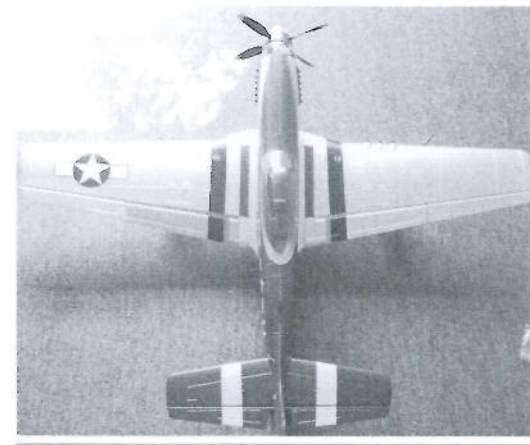
This model airplane is not a toy and is not suitable for persons under 14 years.
Read the instructions carefully before any use. It also has a disclaimer. It is necessary to let an experienced airplane pilot assist you.
The manufacturer reserve the right to modify the specification or printing errors without prior notice.

WARNING:

P-51 Electric R/C model is not a toy and is not suitable for the child under 14 years.

1. Do not fly near: Buildings; Children's play areas, Road traffic, railways airports, overhead power lines and pylons. Do not fly over people.
2. The ideal location for flying is a wide-open space in four directions with no people. (If using a model airfield, be sure to contact the airfield's administrator for permission.)
3. The battery should not be overcharged or put on the flammable material or near flammable material when it is being charged.
4. Always check that other pilots are not using the same frequency (band) in the same area before flight and make sure there you are flying in a safe area.
5. Do not fly in the strong winds.
6. Do not try to catch the plane by hand when it is flying.
7. The children who are younger than 14 years old should be assisted by an experienced adult when the plane is being flown.
8. This model aircraft is designed to be powered by an electric motor. Flying this model aggressively may lead to serious accidents or injuries.
9. Do not touch the propeller when the motor is running, it could lead to serious injuries.

Note: The manufacturer will not take any responsibility for damage or accident caused by the improper use of this model.



Thank you for purchasing our P-51 Electric R/C airplane, P-51 is Powerful Electric Propeller which is ideal for the intermediate or advance flyer.

The P-51 will perform most maneuvers you will want to try, and the nice thing about it is if you happen to meet the ground sooner than you had planned, there is a good chance the plane will survive for P-51 another flight, although you may want a tube of goop or epoxy close by just to be sure you can fix minor tears if they occur.

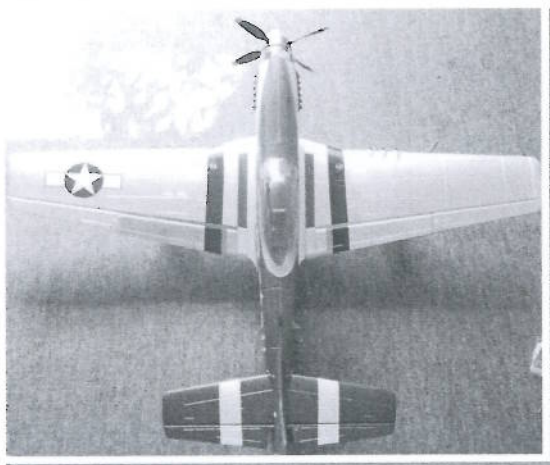
In order to fly the P-51, please make sure you read through the instructions carefully before attempting to operate the model for the first time.

You alone are responsible for the safe operation of your radio-controlled model. Young people should only be permitted to operate this model under the instruction and supervision of an adult who is aware of hazards involved in this activity.

If you have any questions regarding the safe operation of your RC model aircraft, please contact your local model shop for professional advice.

Radio-controlled models are very demanding and potentially dangerous machines, and call for a high level of technical knowledge and skill from the operator, together with a responsible attitude.

Please always keep this instruction manual ready at hand for quick reference, even after completing the assembly.

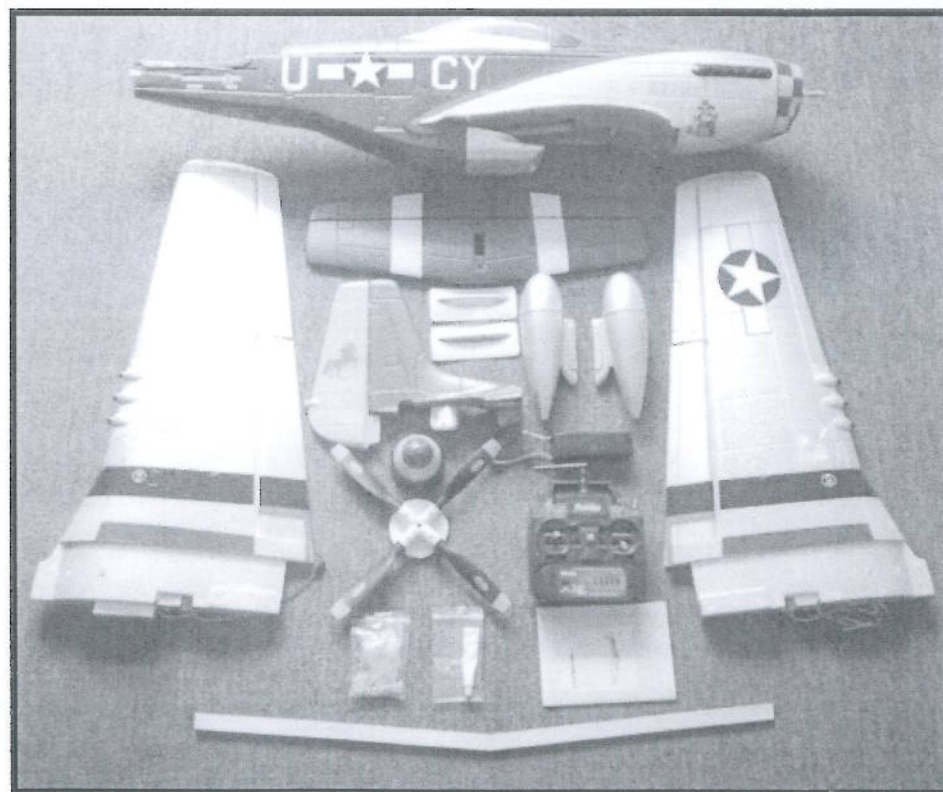


Features:

Powerful Electric Plane with Propeller
Perfect aerobatic maneuvers, such as rolls, loops;
Stable invert flight;
Excellent hedgehopping performance;
Excellent stability of nosing up and down;
Easy to replace the spare parts;

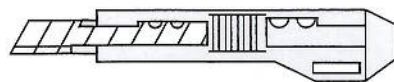
Wingspan approx:1600mm
Length:1400mm
Flying Weight:2,800 grams
Four-blade:16X6
Motor Model:4558
ESC:80A
Battery:14.8V 3200mAh
Servo:9gX4PCS 17gX2PCS

Open the box and put out all the spare parts

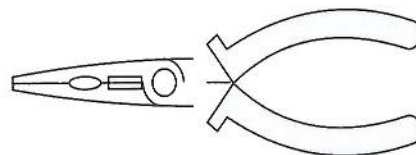


Tools and Items

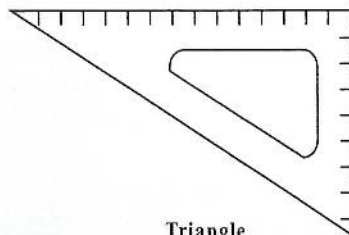
To assemble this airplane you need to prepare some tools.



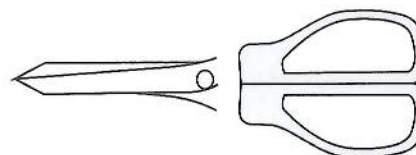
Cutter Knife



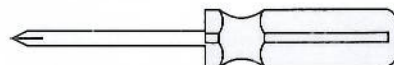
Pliers



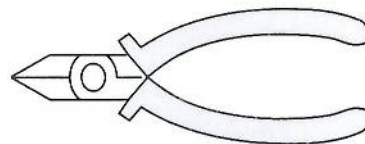
Triangle



Scissors

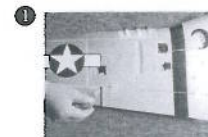


Screwdriver



Nippers

1. Main wing Installation Steps:



Fix kwik links on flap and aileron with screws. Meanwhile, assembly push rod. Make flap and aileron angle leveled, then connect kwik link with push rod by control horn. (Push rod: 1.5*60mm 2 pcs, 1.5*80mm 2 pcs, 1.7*10mm 8pcs, aileron screws: 1.7*15mm 8 pcs)



Stick plastic covers (4 pcs) on servos in main wings.



Stick tanks on wings.

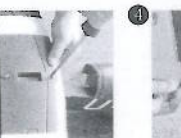
Fix two main wings together and connect wires rightly.



Assembly main wing on fuselage, then fastened them with screws. (PM4*70mm 2pcs)

Stick antenna into fuselage.

2. Horizontal tail and vertical fin installation steps



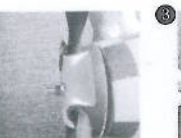
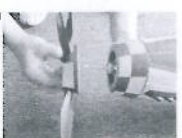
Fix kwik links on horizontal tail with screws. (screws: 1.7*15mm 4 pcs)

Fix kwik links on vertical fin with screws. (screws: 2.6*28mm 2 pcs)

Fasten horizontal tail with screws. (screws 3*40mm 2 pcs)

Put vertical fin into groove on fuselage and screw it. (3*50mm 2 pcs)

3. Propeller Installation Steps

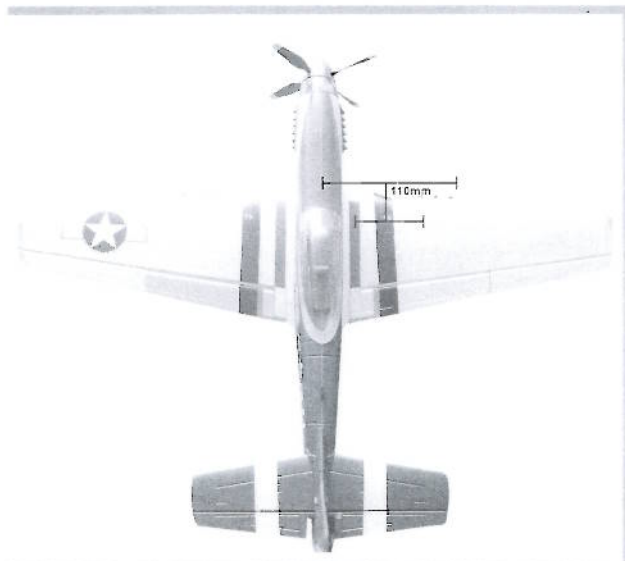


Screw propeller shaft on motor (Screws: 3*10mm 4 pcs)

Fasten propeller with nut and washer (Nut 1 pc, Washer 1 pc)

Fix propeller plastic cap with screw (4*38mm 1pc)

Center of gravity



Charge the Li-Po battery pack

Connect the charger to mains power supply. The battery will be fully charged about 2 hours when the indicator on the charger turns from red to green, and then disconnect immediately. Do not leave battery unattended when it is on charge.

Note: the Li-Po battery will be explosive and fired if overcharged or improperly disposed.

Battery should be kept away from children and animals.

Use specially made charger to charge specially type of battery. Both of them are supplied by Starmax.

The user should take the responsibility for the use of other chargers.

Do not charge the battery if there is any noticeable swelling or the battery temperature is over 70°C.

Do not damage, dismantle the battery.

Do not short-circuit the battery.

Do not put the battery into water or fire.

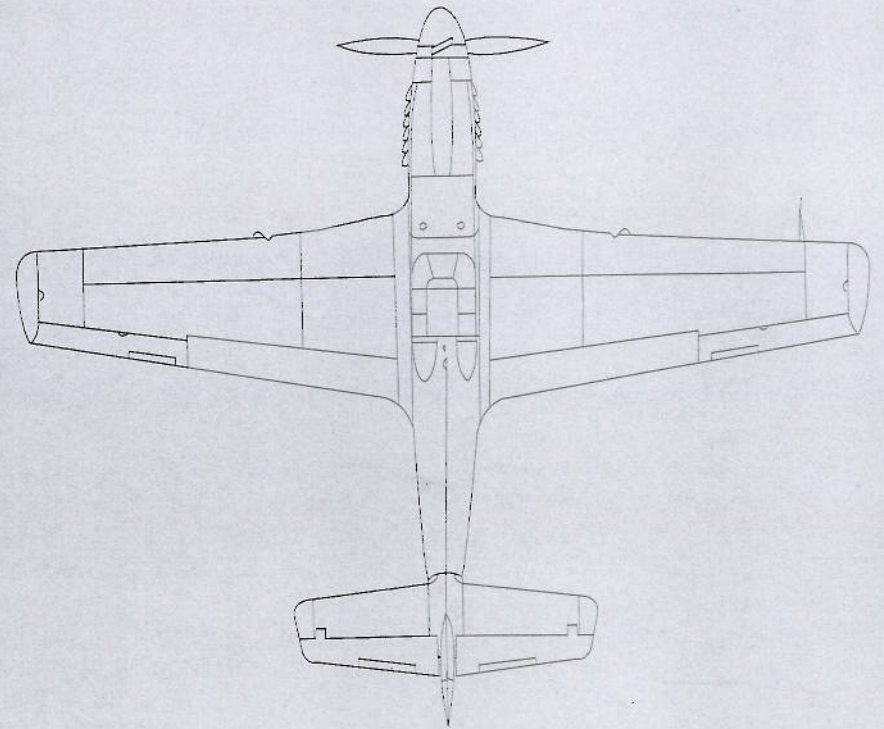
Improper use of the battery will cause fire or explosion!

Pre-Flight Check

1. Check for any bends or damaged parts on main wing, fuselage or tail wing.
2. Check the propeller, adapter and all screws are securely fastened.
3. Always check there are no other pilots using the same radio frequency (band) in the same area!
4. Securely fastened the main wing.
5. Make sure the power switch on the plane is OFF before connecting the battery. Make sure you stay clear of the propeller.
6. Switch the transmitter on, then switch the receiver on.
7. In case motor starts rotating accidentally, having an assistant hold the rear parts of the plane securely.
8. Make sure plane responds properly to control signals.
9. Screw the antenna all the way into the transmitter and test the range of the radio signal.
10. If there is no interference, the plane is now ready to fly.

P-51D MUSTANG

INSTRUCTION MANUAL



CE FC ♻️ Ⓢ
MADE IN CHINA